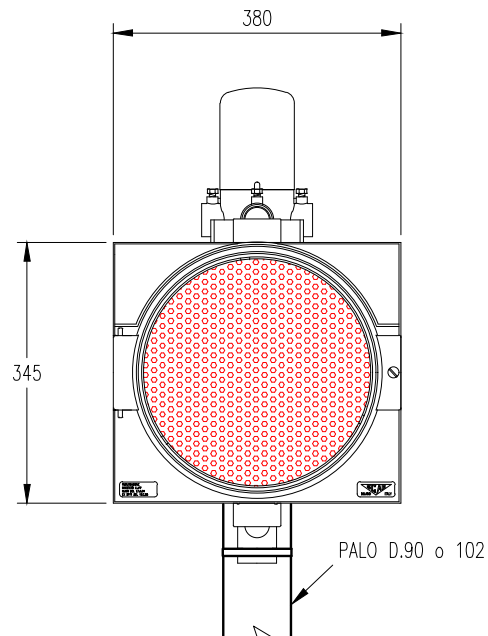
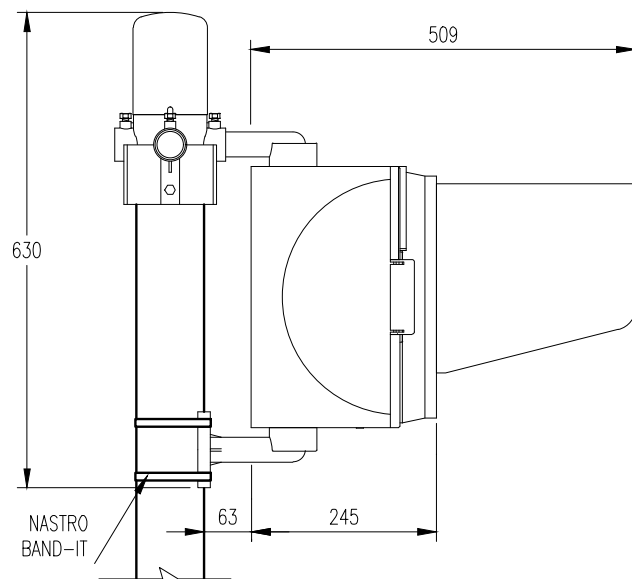


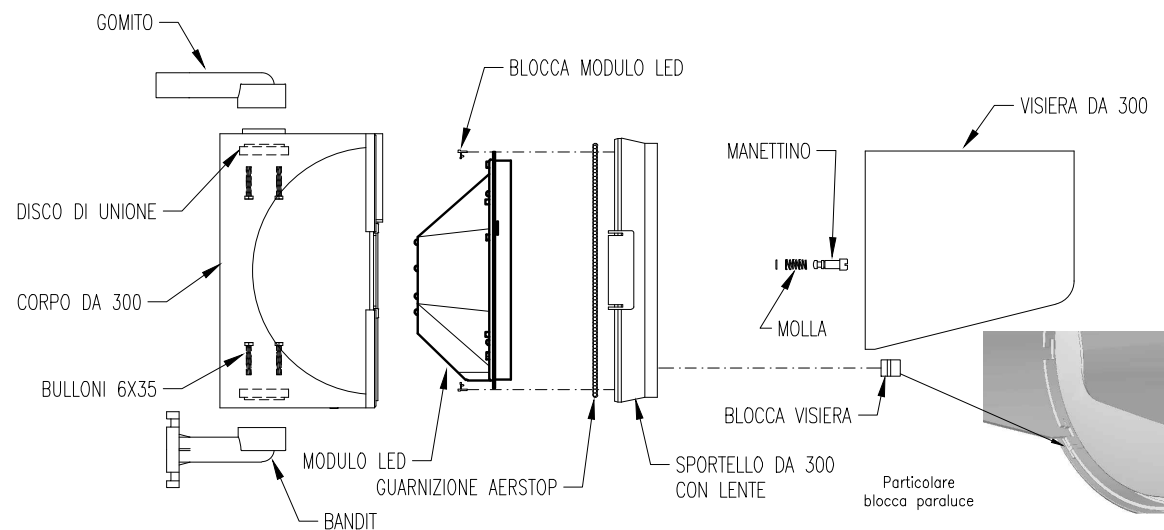
A



3

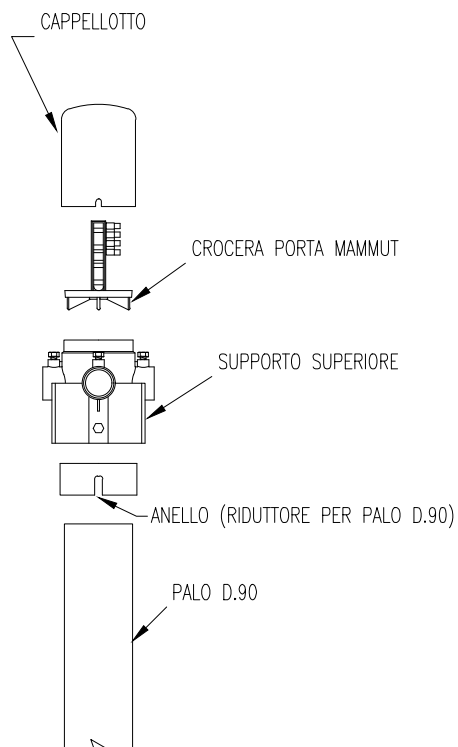


D



A

3



 <b>SEMAFORI • CONTROLLI • AUTOMAZIONE • ELETTRONICA</b>		<b>DISEGNO N° - REV.</b> <b>C04075 -</b>	
		Formato <b>A4</b> Foglio <b>1</b> di <b>1</b> Scala	
Via Volta, 6 - 20090 Segrate (MI) Tel. 02 26930.1 - Fax 02 26930.310 e-mail: info@scae.net - Web: www.scae.net			
<b>Oggetto:</b> Lanterna a 1 luce d.300 lente rossa con attacchi gomito + band-it, tipo stazioni autostradali			
<b>Richiedente:</b> Scae			
Uff. Tecnico / Disegnatore Geom. F. Luceri		Dir. Tecnico / Visto	
		Data <b>18-05-2015</b>	
N°	Revisione	Data	Disegnatore Visto

C

D